

Year 1 and 2 Summer 2 Hart

Author of the Half Term: Ronda Armitage

Shape Poems



Science:

Key Question: What would you like to know about the weather in St Peters?

Key Vocabulary: weather, climate, rainfall, precipitation, temperature, thermometer, data logger

Key Facts:

A data logger records and monitors changes in conditions over time.

We can record the temperature and rainfall on a data logger.

The weather is the way the air and atmosphere feel.

Examples of the weather can be raining, sunny, foggy and cloudy.

The weather changes throughout the year and in the different seasons.

The climate is the long-term weather patterns in an area.

The weather and climate in St Peters is different to the weather and climate in other countries.



PE: Running and Jumping (Athletics, Races and team games)

Key Vocabulary

Athletics, jog, sprint, pace, sidestep, control

Key Facts:

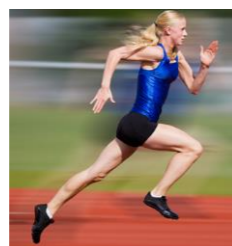
A sprint is a fast run and a jog is a slow run.

Pace means how fast or slow you are going.

Practising running and jumping means you will be able to run faster and jump further.

It is important to have control in order to do your best and stay safe.

It is important to talk to teammates and work together when playing team games.



Computing: Digital Photographs

Key Vocabulary: digital, iPads, portrait, landscape, flash, light, focus, adjust, composition, editing, software

Key Facts:

We can use digital devices like iPads, phones and laptops to take digital photographs.

Photographs can be portrait or landscape.

Photographers take photographs.

Photographs need good lighting and focus to have good composition. We can also use the flash tool to improve photographs.

We can adjust photographs to change how they look in editing software.



DT: Paper folding experiment

Key Vocabulary:

Build, Join, Combine, Construct, Assemble, Structure, Stable, Rigid, Strengthen, Support, Height, Width, Design, prototype

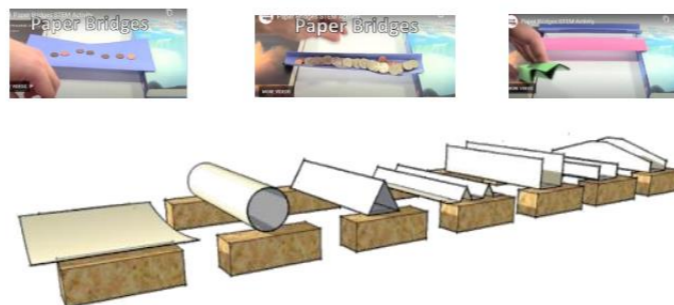
Key Facts:

Tower bridge, Sydney bridge and the Transporter bridge are famous landmarks.

We can assemble, join and combine materials in order to make a product.

Card and paper can be folded to make it stronger to use when building a structure.

We can make prototypes to help to work out the best designs.



RE: What can we learn about the story of St. Hilda?

Key Questions:

Key Vocabulary:

Saint, monastery, abbess, converted

Key Facts:

A saint is someone who is known as holy in the Christian faith.

Hilda converted to Christianity when she was 13.

Saint Hilda was the abbess of Hartlepool and then Whitby.

She was one of the most important religious centres when she was alive.

Saint Hilda was well education and wise.

She searched for talented people who could serve God by joining her church.

She was a peacemaker and sorted out disputes. She believed that reading the Bible was important because it taught truths about God.



PHSE: Money Matters

Key Vocabulary:

source, earn, interests, strengths, save, wages, salary, bank account, coins, bank notes, pounds, pence, budget

Key Facts:

Money comes from different sources.

There are lots of different jobs and jobs help people to earn money to pay for things.

Money needs to be looked after carefully.

People make different choices about how to save and spend money.

There is sometimes a difference between what people want and what people need.

People can't always have what they want.

Different jobs need different interests and strengths.



Geography: How do we get to the beach?

Key Vocabulary: beach, cliff, coast, sea, factory, office, port, harbour, shop, directions, route, journey, travel, near, far, left, right, dunes, breakwater

Key Facts:

Seaton Carew is a beach near Hartlepool.

Some key features of Seaton Carew beach are sand, sea, dunes and a breakwater.

Some features of coastal areas are ports, harbours and cliffs.

A port is a place that is by water where boats can load and unload.

A harbour is a man-made area for boats to shelter in away from the rougher sea.

A cliff is a steep rock face.

Dunes are mounds of sand formed by the wind.

A breakwater is a barrier built out into the sea to protect a coast from the waves.

A route is a way that a person can go to get somewhere.

There are often different routes that we can take to get to the same place.

We can draw maps to show a possible route.



British Values : Protected characteristics

Key Vocabulary:

age, gender, disability, marriage, religion, tolerance, respect, similarities, differences

Key facts:

We are all unique.

There are differences and similarities between ourselves and others.

We should never be treated or treat others differently because of age, gender, disability, marriage or religion.

It is important to show tolerance by respecting other people's opinions.

Music:

Key Questions: How does music connect us with the environment?

Key Facts:

Music is a natural phenomenon, it comes from nature.

All musical instruments have come from resources around us.

Music is inspired by natural sounds.

Music can help to protect the planet.

We can create a story through music.

