

# Hart Primary School

Email: [info.hart@nllt.co.uk](mailto:info.hart@nllt.co.uk)  
Website: [www.hartelwickfederation.org.uk](http://www.hartelwickfederation.org.uk)  
Facebook: [@hartprimaryschool](https://www.facebook.com/hartprimaryschool)



News to You - Weekly Newsletter

Autumn Term - 23/10/2020

## Message from the Headteacher

Dear Parent and Carer

The full return of pupils to school has brought about numerous changes which for many families has resulted in adapting our usual routines to ensure we keep one another safe. The support and positivity that you have shown towards the Hart family has enabled our school to grow and adapt to the world as it is so that our children can continue to grow, be happy, learn and thrive. Thank you.

I would like to thank all EYFS parents for their flexibility, patience and support this week whilst school sought the advice of Public Health England regarding the positive COVID case notification. This is the schools first delivery of remote learning to our 3-5 year olds. As with all things, we will review and adapt to improve the provision of our children. We value parental views and an evaluation form will be with you soon. We would really value your contribution

### Activities In School

Due to the COVID restrictions we were unable hold our very popular Harvest Festival at St. Mary Magdalene Church. This year we celebrated remotely and I would like to thank Reverend Janet for joining us in the service. The reflections from the pupils were a testament to their resilience, positivity and empathy for others.

The Year 3 children have also enjoyed participating in the Pedestrian training. The supervising adults commented on their outstanding behavior and eagerness to learn.



### Autumn 2

Next half term, Y1/Y2 may come to school in their PE Kit on Tuesdays and Wednesdays PE will take place outside, whenever possible and children can wear navy tracksuits in the colder weather. Any queries please contact Mr Gibson or Miss Sturrock.

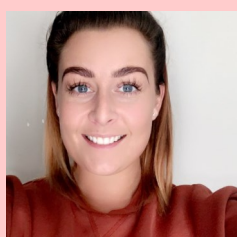
Year 3/4 and 5/6 will be taking part in Commando Joe sessions on Wednesdays and will also need to attend in PE kits on these days. School tracksuits are available to buy from our suppliers listed on our website.

### Hart Family News

Now more than ever, I believe that it is important to celebrate and share the many acts of kindness that our pupils do to support the local community whether it be litter picking or helping a neighbour.

Please email any acts of kindness or achievements to celebrate on our fortnightly newsletters to [info.hart@nllt.co.uk](mailto:info.hart@nllt.co.uk)

We are pleased to welcome two new members of staff to the Hart family – Miss Watt and Miss Burnham



## AWARD WINNERS

### Super Star

Y1/2 **Amelia Laybourne**  
Y3/4 **Jessie Greener**  
Y5/6 **Olivia Coverdale**

### Citizenship

Y1/2 **Emma Kelly**  
Y3/4 **Annabelle Bramley**  
Y5/6 **Olivia Fewster**

### Golden Quill

Y1/2 **Frankie Stokes**  
Y3/4 **Florence Fraser**  
Y5/6 **Caitlyn Bryson**

### Maths Award

Y1/2 **Henry Gravett**  
Y3/4 **Grace Clark**  
Y5/6 **Maddison King**

### Reminder of Drop off and Collection times

#### Early Years

Drop off: 9.05am-9.15am  
Collection: 3.05pm

#### Years 1 and 2

Drop off: 8.55am-9.05am  
Collection: 3.15pm

#### Years 3 and 4

Drop off: 8.45am-8.55am  
Collection: 2.55pm

#### Years 5 and 6

Drop off: 8.35am-8.45am  
Collection: 2.45pm

I would like to finish off this weeks newsletter with a moment of reflection linked to our school values

'Thankfulness'

Let us be thankful for the gifts of Harvest

And for all the good things which we are able to produce from this beautiful world.

Let us be thankful for all the talents, hard work and support of many during this difficult time.

Let us be thankful for the creativity of the human mind and the way in which we have supported one another and our pupils .

Be safe and I look forward to seeing you all on the 2nd November

Mrs Hill

### **Dates for your diary**

Children return to school Monday 2nd November

School photo day Tuesday 17th November

**Please note the schools new email address [info.hart@nllt.co.uk](mailto:info.hart@nllt.co.uk)**

**I would like to thank parents/carers for following guidelines and ensuring that individuals who are displaying one or more of the symptoms of Coronavirus must NOT enter the school premises and working with school by I informing us immediately if your child is displaying symptoms . This helps to keep our children , staff and school community safe.**

**Over the half term if you experience a positive case of a pupil please email [info.hart@nllt.co.uk](mailto:info.hart@nllt.co.uk), this mailbox will be monitored and a member of staff will be in contact from a withheld number as soon as we are able to.**