

Year 1 and 2 Summer 2

Author of the Half Term: Eric Carle

Poem: The Tale of Custard the Dragon by Ogden Nash

Science:

Key Question: How can we encourage minibeasts to live in the ground of St Peter's Elwick?

Key Vocabulary: micro habitats, provide, depend, damp, shelter, minibeast, insect, conditions.

Key Knowledge:

Minibeasts are a large group of animals and include worms, snails, spiders, woodlice, centipedes and beetles.

A microhabitat is a small area that has particular features which enable an animal to live there. It is different from the area around it. Examples of microhabitats are ponds, compost heaps and flower borders.

Different animals prefer different conditions. For example, woodlice like cool, damp areas.

Most living things live in habitats and these provide for the basic needs of the animals or plants that live there.



PE: Running and jumping (Athletics, races and team games)

Key Vocabulary: athletics, speed, land, control, pace, sprinting, jogging, balls of feet

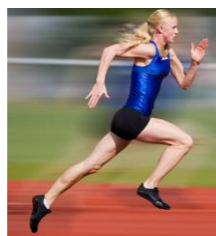
Key Knowledge:

It is important to talk to teammates and work together when playing team games.

Practising running and jumping means that we can run faster and jump further.

Running at a fast pace is called sprinting and is run on the balls of our feet.

Running at a slower pace is called jogging.



Computing: Digital Painting – to make a picture in the style of an artist **Name here**

Key Vocabulary: freehand tools, colour, size, effect, digital, drawing, undo, eraser, fill tool, shape tool

Key Knowledge: Freehand tools allow us to decide which effect we want to create in the paint programme when we are digitally drawing. Different tools give us different textures and shapes within our drawings. Which tools will give you desired effect in your drawings and do you need to change the brush size?

DT: Textiles – Puppets

Design Specification: To make a puppet for a child

Design Criteria: Your puppet must:

- Be brightly coloured
- Have eyes, a mouth and a nose
- Have alien features of child's choice
- Have straight stitching around the outside

Key Vocabulary: design specification, design criteria, rese features, needle, thread, running stitch, felt, fabric, material pens, measure, mark out, finishing techniques

Key Knowledge:

It is important to create a design with drawings and labelled parts that meets the design specification.

We need to measure and mark out before cutting materials.

Running stitch is a type of stitches.

Running stitch can join materials together.

We can improve our puppet with finishing techniques.

We evaluate our finished puppet against the design criteria to see if we have met the design brief.



R.E. Who am I and what does it mean to belong?

Key Vocabulary: parable, calligraphy, ICHTHUS, symbol, baptismal, rosary beads, Ka'ba, Islam

Key Knowledge:

We belong to different groups, including our family and our school.

Some Christian symbols of belonging are baptismal candles, crosses as badges and necklaces, the fish symbol, rosary beads and the Bible. The fish symbol is called ICHTHUS.

Some symbols of belonging to Islam are calligraphy, a picture of Ka'ba, and a prayer cap.

The parable of the Lost Sheep tells Christians that everyone is important to God and can belong in His family.

Christians believe that people should show love for one another.



PHSE/ RHE: Zippy's Friends – We Cope

Key Vocabulary: happy, acceptance, support, adapt, change, situation, unsettled

Physical wellbeing, mental wellbeing

Key knowledge:

Finding out about what makes us happy helps us accept situations that we cannot change. We can help our friends and families to find a way to be happy also.

Sometimes we need to adapt to situations when we feel unsettled about something new or different. We can help others when they feel unsettled about something new or different.



Geography: Hardwick Park and the Peruvian Rainforest

Key Vocabulary: human features, physical features, aerial photograph, environment, manmade, sketch map, field work,, transport, tropical, temperate, climate, deforestation, Amazon, Peru, Peruvian, vegetation

Key Knowledge:

An aerial photograph is a photograph taken from above a place that can show you its shape and features.

Soil, vegetation, forest, wood, rainforest and rivers are physical features.

Houses, roads, paths, buildings, bridges and car parks are human features.

Hardwick Park and Hartlepool are in the north of England.

The Peruvian rainforest is in Peru in the continent of South America. It is part of the Amazon rainforest.

There are similarities between Hardwick Park and the rainforest:

They both have trees, paths and water. Animals live in both places.

There are differences between Hardwick Park and the rainforest.

Hardwick Park covers a small area and people don't live there; they only visit it. It is easy to get there on roads. It covers a small area. It has a temperate climate.

The Peruvian rainforest covers a huge area.

Indigenous people are people that have always lived in a particular place.

Indigenous people live in the rainforest.

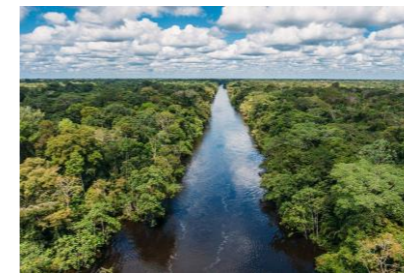
People use the rivers for transport.

The Peruvian Rainforest has a tropical climate. There is a wide variety of plants, trees and animals living in the rainforest.

Deforestation is the removal of trees in a forest.

Deforestation can damage habitats for animals and destroy rare wildlife and people's homes.

The Amazon Rainforest



Hardwick Park



Music: Playing the Recorder

Key Vocabulary: recorder, notes, rhythms, identify, listen



Key Knowledge:

How to play notes G, B and A on the recorder. What do they sound like?

Where to place your fingers on the recorder to create these sounds – see photo

Listening to and then repeating a rhythm on the recorder.